



27 Monck Street, Westminster
London SW1P

GARTON JONES.COM



GARTON JONES
LONDON

27 Monck Street, Westminster
London, SW1P

GARTON JONES.COM

49 Marsham Street Sales +44 (0) 20 7340 0480
London westminster@gartonjones.com
SW1P 3DP www.gartonjones.com

£615 Per Week

We are pleased to offer this well presented apartment available to let located on the 3rd floor of this popular development located in the heart of Westminster. The property is extremely well proportioned measuring at 483 Sq.Ft (45 Sq.M) and comprises of reception room with access to balcony, separate integrated kitchen, good size double bedroom with fitted wardrobes, modern bathroom and ample storage throughout. As a resident of Asquith House you will also have use of a 24 hour concierge, there is a lift to all floors and the benefit of secure underground parking. Monck Street is very close to the links of St James's Park, Westminster and Victoria which are all within walking distance. There is easy access for the renowned local landmarks which include the Houses of Parliament, Westminster Abbey, Tate Britain Gallery and the River Thames. The surrounding area also offers a variety of amenities which include Sainsburys, Tesco's, Waitrose and many other retail stores. There are a selection of restaurants such as Osteria Dell'Angolo. The Cinnamon Club, The Ivy Victoria, Flight Club Victoria and many more.

**Please note that the furniture may differ slightly to that shown in the current photos

EPC Rating: C (72)

Deposit: 5 Weeks

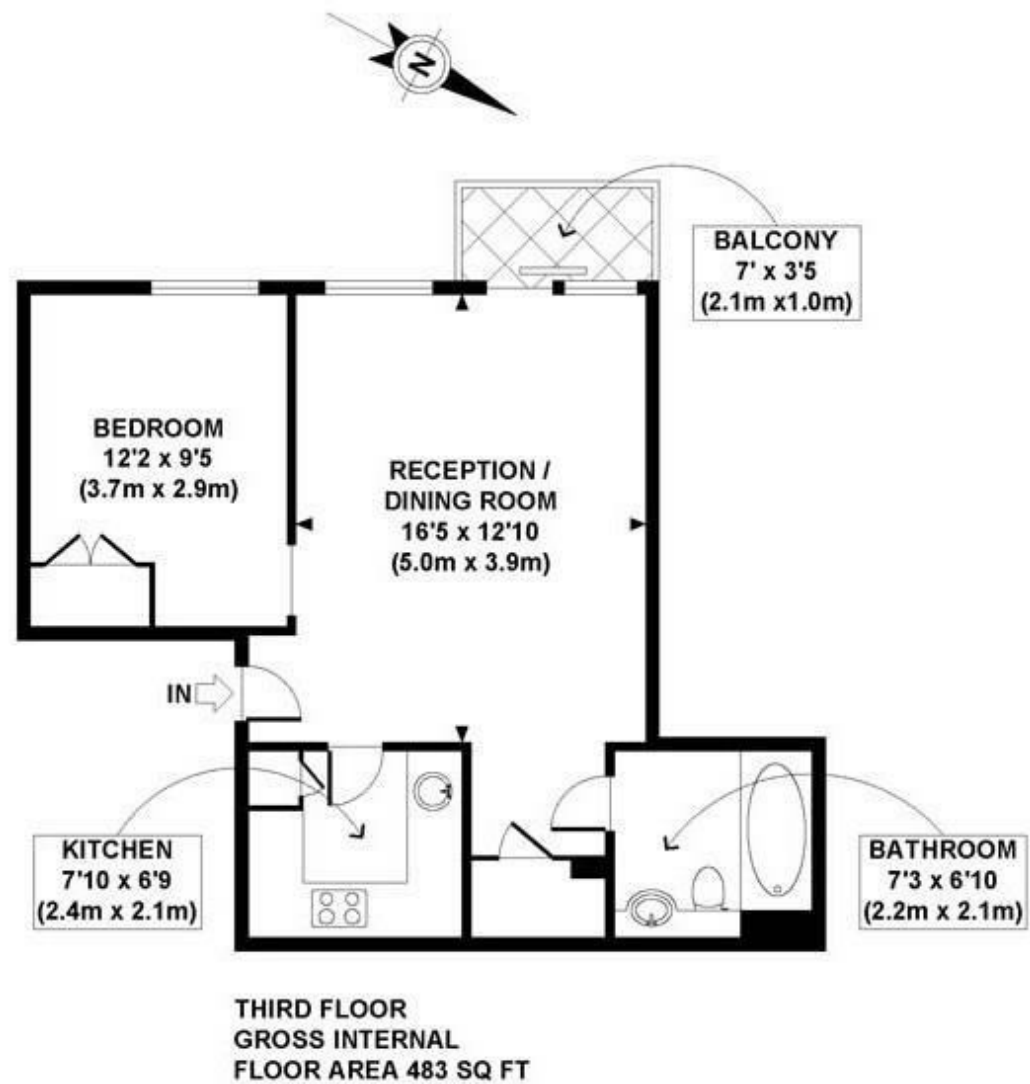
Tenancy Term: 12 Months Minimum

Council Tax Band: F (London Borough of Westminster)

- One Bedroom Apartment
- 3rd Floor (Lift)
- 483 Sq.Ft (45 Sq.M)
- Reception Room & Separate Integrated Kitchen
- Modern Bathroom
- Balcony
- Available: 9th January 2026
- 24 Hour Concierge & Secure Underground Parking
- Walking Distance to Westminster, St James's Park & Victoria Transport Links
- Close To A Selection Amenities



EPC certificate available on request.



APPROX. GROSS INTERNAL FLOOR AREA 483 SQ FT / 45 SQ M

